



Northlands Mine Training and Research Institute

Presentation to Northern Opportunities Forum

November 21, 2013

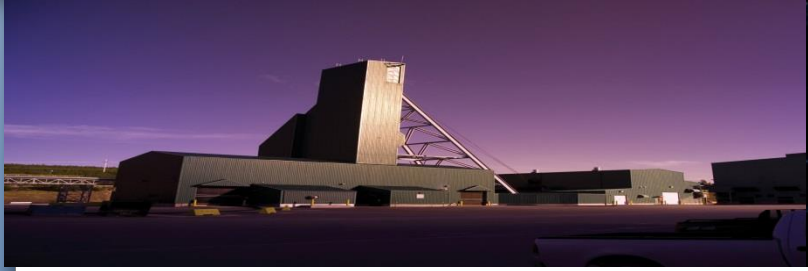




MTRI – The Need

- **\$50B to be invested in expansions and new mines in SK between 2008 and 2028**
- **Mining is biggest contributor to northern economy, 1789 Northern Residents are employed at northern mine sites**
- **Exploration, potential new mines, and operating mines in the north**
- **Significant gaps between skilled labour requirements of the mining sector and availability**

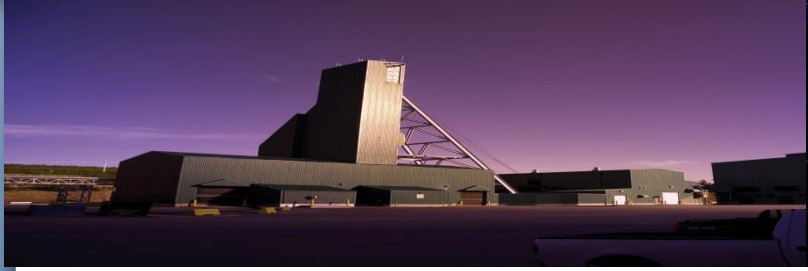




MTRI – The Opportunity

- **Northlands College has over 20 years of partnerships in training with mining industry**
- **The MTRI will build on that relationship through an industry partnership approach similar to the former Haileybury School of Mines**
- **The MTRI will form an Industry Advisory Committee and continue to develop Multi Party Training Agreements**





MTRI – The Model

- **MTRI will work toward a training model that offers consistency for students and flexibility for industry**
- **This can be achieved by introducing a modularized training system that builds on core skills**
- **The goal would be training that can be entered or exited at many points depending on skills and accreditations required**





MTRI – Facilities and Resources

- Center housed in new and renovated buildings
- Features 4 labs with apparatus for advanced training
- Multi purpose lab will teach sample preparation, and basic environmental sample analysis
- Mining lab will house ventilation simulators, hydrolab, map room

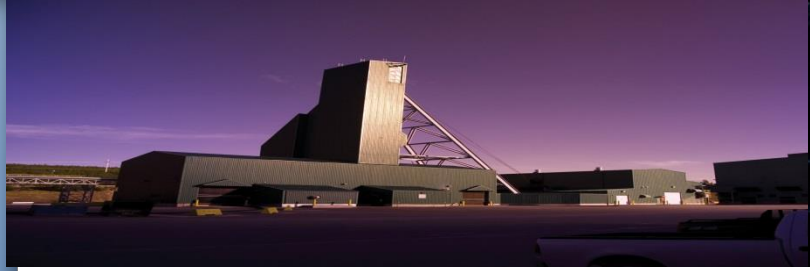




MTRI – Facilities and Resources

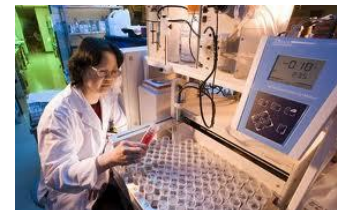
- **Geology lab will house mineral collections and microscopes, electrical lab for geophysics**
- **Computer lab will house high end computers with Vulcan and GEMcom 3D software, AutoCAD, ArcGIS, and large format printer**
- **Simulator with Scoop Tram, Jumbo Drill, and Heavy Equipment modules**





MTRI – Support For Research

- Will forge partnerships with research institutions, industry and individual researchers
- Researchers will be able to access facilities, students, and faculty to assist in projects
- MTRI connected to SRNet and CANARIE high capacity research networks
- Linkages to training programs wherever possible
- Diamond Drill Rig for training and research





MTRI– Commercial and Business Support

- **Institute can provide business development and commercial services that support the growth of the mining industry**
- **Assaying and GIS support can make exploration more efficient**
- **Mine service and supply sectors can benefit directly from business development services, training, support, and certifications**





Thank You
For More Information Contact:

Toby Greschner
President and CEO
Northlands College
greschner.toby@northlandscollege.sk.ca

Randy Johns
Director, Mine Training and Research Institute
Northlands College
randy.johns@kcdc.ca

